

The Neuadd Holiday Planner

Here's our personal advice for finding some of the best places
Feel free to take this guide or tear pages out for walks

Text Julia on **07854 773419** if you have any questions or would like advice

Walking the Meadow Path

Links you to the canal, the town & mountains
See back page to get you started

Drive the Mountain Road

It's mandatory! Turn left at bottom of our drive. Drive just a couple of minutes and you'll be above 1,300 feet with gorgeous views. You can turn round in the big lay-by or carry on to the T-junction to turn right and head along/down to the valley bottom. Awe inspiring views. At the bottom turn right at the T-junction to head back to Llangattock.

Maps & Guides

Please don't take our Ordnance Survey maps or walking guide books off site (people tend to photograph the bits they want to refer to), we don't want them getting grubby. You can buy copies in Crickhowell (see next page) .

Have a gorgeous holiday. Julia

Crickhowell Shops, Cafes & Pubs



Nicknamed “Knightsbridge on Usk” Crickhowell has fought off retail chains and become renowned for its independent shops.

There’s a family owned department store, fashion, jewellery, outdoor adventure shop, bookshop, off-licence, general store, butchers, grocery, bakery, zero-waste shop, newsagents and tourist information office.

Latte-Da



The Bear of Crickhowell



40 years in the same family, The Bear is a traditional coaching inn which is very walker friendly. We especially like the ale. The kitchen is very fast (and open longer hours than most local pub kitchens).



Webbs of Crickhowell

Better than John Lewis?
A must-see aspect of any visit to Crickhowell.

Natural Weigh

Sustainability is in the blood of this successful zero waste shop. Was the first in Wales.



Tourist Information and Kit



Crickhowell
Adventure

Maps
Advice
Books
Kit



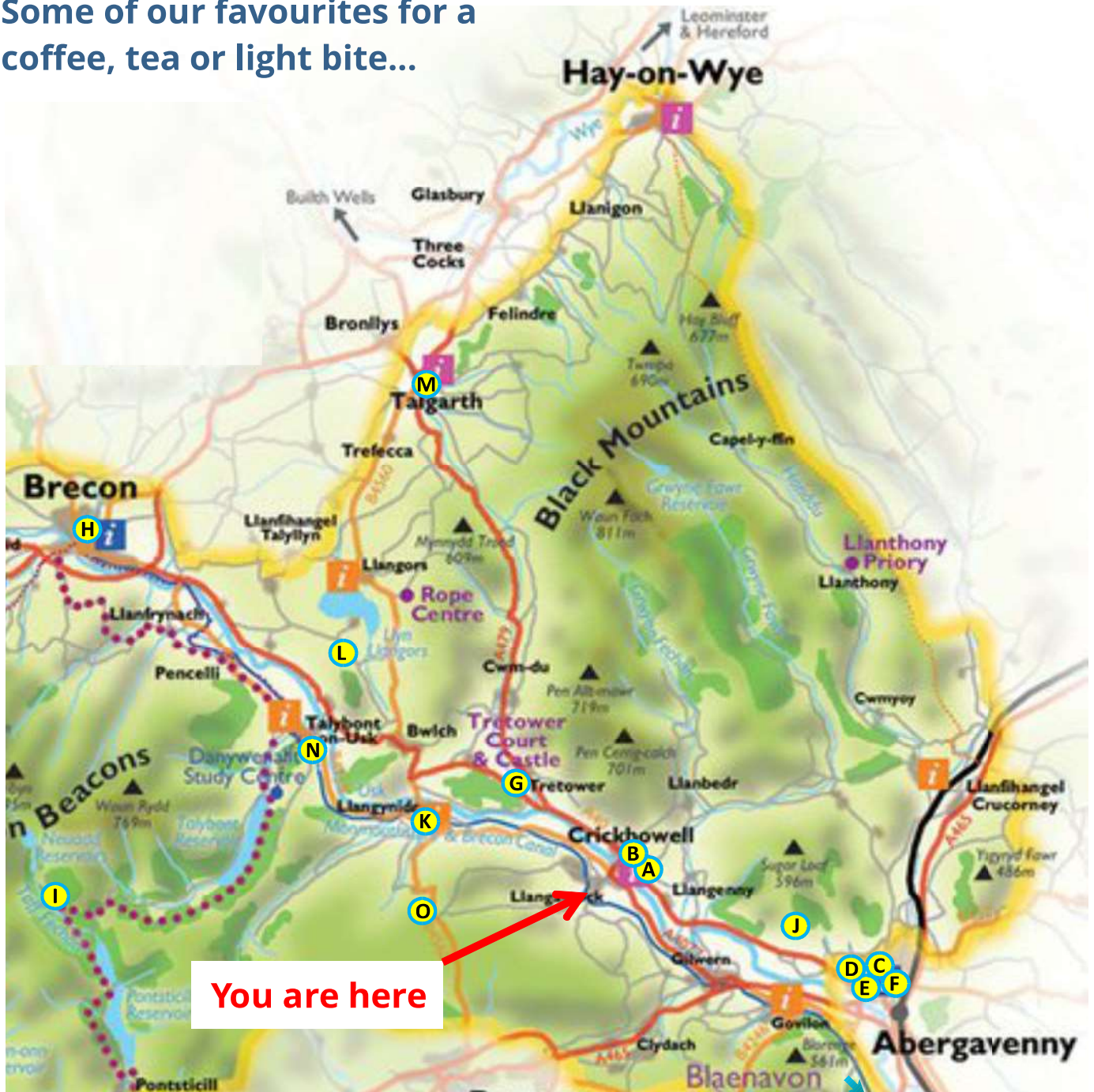
Tourist Information Office

Bookish Cafe
& Bookshop



Favourite Cafes

Some of our favourites for a coffee, tea or light bite...



A: Latte Da, Crickhowell:

Friendly, relaxed, light and airy. Opposite the visitors centre. Good for drinks and cakes, also offer some light meals. Garden out back.

B: Halo, Crickhowell:

Cafe in large courtyard area. Great sense of happiness and some creativity.

C: The Art Shop and Chapel Cafe, Abergavenny:

Cafe and casual restaurant (licenced). Interesting creative, health oriented food and modern vibe. The space is shared with an art shop which adds ambience. Can get very busy. Out the back of the market you will see the Chapel across the little stream.

D: Fig Tree Espresso, Abergavenny:

Small cafe with a personal touch. Very good quality cakes and drinks. No savouries. Wonderful reviews. We swap between here and the Chapel. Small garden out back.

E: Cwtch Cafe, Abergavenny:

Good quality cafe with a traditional feel. Telegraph newspaper rated as in top 30 in Britain.

F: Afternoon Tea at The Angel Abergavenny:

The Angel is a landmark establishment in the town. If you are in need of a treat, The Angel take afternoon tea very seriously. Maybe opt for the Champagne option! They make it feel like a special event whilst managing to keep things very relaxed.

G: Y Bwyty Back Cafe & Restaurant, Tretower:

In a recently upgraded 900 year old barn forming part of historic Tretower Court site and visitor centre. Worth phoning to check the day-time cafe is open. Restaraunt has closed apart from occassional pop up events so that might start to affect the cafe (same operator).

H: The Hours Cafe & Bookshop. Brecon Cathedral

A hidden gem within the quiet Cathedral grounds. Our favourite spot is on the lawns beneath the sycamores. Hot and cold food, lunches or tea/coffee & cakes. Interesting Cathedral.

I: The Old Barn Tea Room, Torpantau:

Exactly what you'd hope to find in the mountains. Old fashioned, simple. Home made food. Near Pontsticill reservoir.

J: Sugarloaf Vineyard, Abergavenny:

This is a truly exceptional place. Seating is outdoors or semi-outdoors. They serve cakes, cheese, toasties and meats as well as hot drinks and beer/wine. Good views, lots of fresh air and a relaxed 'in the country' atmosphere. Can combine with a walk on Sugarloaf Mountain (road to the mountain carpark is a bit scary)

**K: Walnut Tree Riverside Café Bar, Llangynidr:**

A well liked and very down to earth licensed Café. Has outdoor seating and a very practical atmosphere with plastic gazebos. A small path leads down to a popular wild swimming spot. Ideal to combine with a riverside or canal side walk or a walk up Tor-y-Foel. Good reputation for breakfasts, curry nights and vegetarian options.

Tucked behind the village post office.

L: Walled Garden, Treberfydd:

This Victorian walled garden is a plant nursery that feels like a welcoming haven. You can sense the place is more than a business... it's clear that Alison adores the place. A visit here is essentially to experience the nursery, perhaps pick up a few plants. The café is serve yourself and rustic.

A good place to combine with a visit to Llangasty church, and walk alongside Llangorse lake to visit the bird hide that is situated close to Ty Mawr.

M: Talgarth Mill:

Working watermill (you can tour it yourself or join a guided tour) with bakery and café.

N: Canal Side Cafe, Talybont:

Simple cafe, bacon sandwiches, teacakes and ice creams kind of place. Open every day. Good for stocking up before a walk or ride. We cycle there along the canal for a morning coffee. Next door to Bikes & Hikes.

O: Little Dragon Pizza Van, Llangynidr Moor:

5min drive. Find them on Facebook. 5-8pm Fri-Sun

Favourite Pubs/Restaurants

The places we most often choose.
(There are many more)



A: The Horseshoe, Llangattock:

Easy walking distance. This pub feels like a locals pub and you may be put off by people standing around outside but its very friendly and genuine. The beer is good and the food is caringly created with a Jamacian twist. The Jamaican chef will come to your table to make you welcome. Nice people.

B: The Vine Tree, Llangattock.

More of a restaurant than a pub. The decor is modern, and the kitchens are open sided so you can watch the chefs at work. Lots of good feedback.

C: The Bulls Head, Craswall:

Regenerative-farm to table gastro pub in the wilds. Strong on charcuterie and grass fed beef. Local walks.

D: The Bear of Crickhowell:

Large coaching inn with a good range of real ales and a remarkably fast kitchen. Tends to have longer daytime kitchen hours than others. Food is good and has a wide choice. A really memorable and special pub. Often frequented by walkers. Dogs are sometimes treated to a surprise bowl of food!

E: The Dragon, Crickhowell:

Great garden location in the summer. Has been had a drop in reviews recently so maybe not first choice for that special meal. The tables out front by the roadside are good spot for a beer and snack.

F: The Dragons Head, Llangenny.

Simple village pub. Nice walks by the river. Friendly, relatively in-expensive pub-grub. A homely, down to earth favorite.

G: Tree Beards Bar, Crickhowell:

A very "happening" Micro Craft Beer and Cordial Bar. Good ales and a positive on-trend vibe. Situated on the high street next to Natural Weigh (also worth a visit). A very friendly and snug kind of place with few outdoor seats to watch the town.

H: Casa Bianca, Abergavenny:

Friendly Italian restaurant. A labyrinth of dining rooms plus some outdoor seating. Busy.

I: The Red Lion, Llangorse:

Very popular pub with a speciality for pies (they do other food too). A good place to drop into after a walk by Llangorse lake.

J: The Felin Fach Griffin:

Just off the A470 north of Brecon. Very professionally run food oriented pub. Restaurant style fine dining food but the atmosphere is of a warm welcoming top quality pub. Beer is good. In fact everything is very good!

K: The New Inn, Bwlch.

Doesn't look appealing from the outside but this small pub is a quite special. It has a fresh, vibrant, well loved feel. The menu is very "pub oriented", simple but nicely cooked. The beer is first class. They run a small bunkhouse so you often find a younger clientèle. At weekends you need to book if you want to eat (it's very popular). The car park is small so you may need to hunt around the village for a space.

**L: The Crown at Pantigelli:**

Located on the other side of Sugarloaf on the Old Hereford Road, north of Abergavenny. Known for good food. Food oriented pub but has a small bar area if you just fancy a drink. Very well run, family feel. Best to book. Never been dissatisfied.

N: The Coach & Horses, Llangynidr

Large canalside pub with garden. Nice deli with fresh fish and local produce.

O: Foyles of Glasbury:

This restaurant and hotel has a very modern and airy feel. Service and food are excellent

R: The Towpath Inn, Gilwern.

A good one for evening bike ride along the canal. Relaxed pub with a fresh feel. Have visiting street food vendors (check ahead). Wonderful heated outdoor bench.

M: Llantony Priory.

Breath-taking location. Feels like Tolkien's middle-earth. We don't tend to eat here but it's a good destination for a walk and a beer. The hikers bar is in a stone vaulted room slightly below ground. You can also sit out on the grass. Very basic. Very Stunning.

P: Tapas Twist, Abergavenny:

Trendy feeling eatery

Q: Chesters Wine Merchants, Abergavenny:

Soak up a glass of wine, try the snack menu (using locally sourced ingredients) then peruse the 300 bottles.

S: The Goose and Cuckoo, Upper Llanover.

This is how a country pubs used to be. Simple and not polished in any way. The food is clearly home cooked, wholesome and good quality. Their website has info on local walks. Two pub fanatics that visited 20,000 UK pubs over 33 years rated this as number 3! Narrow lanes. Lovely views from the garden.

Beautiful Craig Y Cilau

Where we take our friends.....





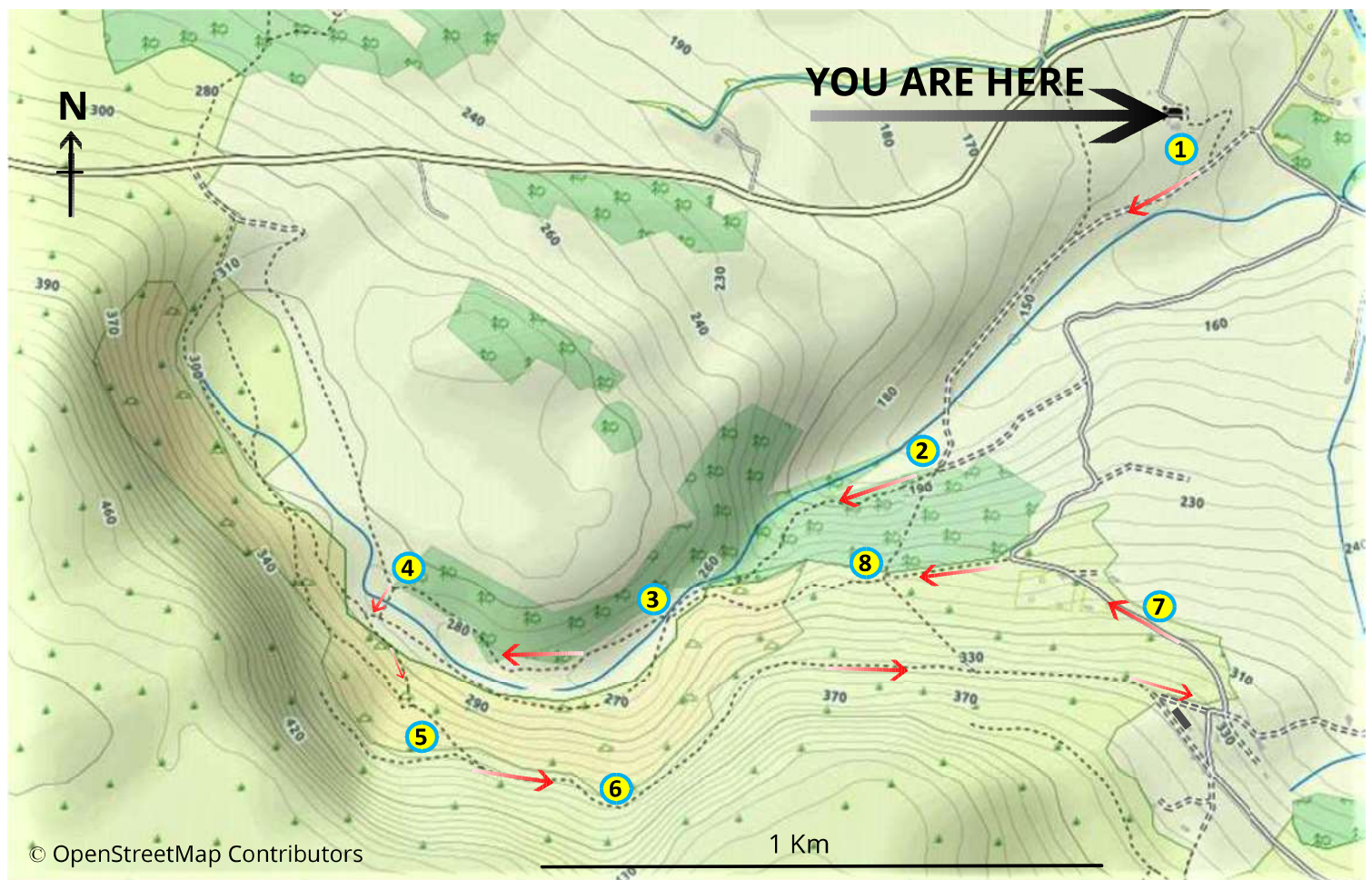
This 2+ hours strenuous walk feels like an adventure. Part of the climb follows the path of a mountain stream. At times you'll be concentrating on where to place your feet, you'll keep getting glimpses of the crags on Llangattock Mountain and you'll ascend into a lovely wooded valley.

This area is all part of the National Nature Reserve of Craig Y Cilau. It's worth using google to learn about the rare habitat, the unique Whitebeams, the bats and the extensive cave systems.

There is a lovely single-track path that climbs across the open mountainside up to the old tramway running high on the mountainside just under the cliffs. The cliff line bowls around above the woodland you've just walked through and starts to open up huge views across the national park. Its worth taking a torch to take a look inside some of the caves you will see on the tramway.

You will see many footpaths on the map, so you can adapt things, but the route we describe is our favourite. We can't believe we live so close to this lovely secret!





1 : To the Incline

Take the mown path down our field to the personnel gate then turn right and follow the old tramway. You will reach a stile that's up a few rough steps.

You will now see the tramway rising steeply up the mountainside "The Incline"

Doggy Note: There are one or two places on this walk that your dog may need to do the equivalent of getting over a gate. If this is a worry then you may prefer to look up other routes through Craig Y Cilau in the walking guides in your cottage.

2 : Wiggly Path

Go a short way up The Incline and look for the permissive path that leads off on the right, this starts out running just above a field boundary at the edge of the woods.

This path is **quite rocky and uneven**. When you get closer to the stream it starts to climb and gets quite narrow. At times you may need to hunt for the path but you will see it's well trodden when you find it. Keep the stream on your right.

A good landmark is when you enter a level clearing where the stream has eroded a steep loose curved bank. The stream disappears underground here, you may notice the river bed becomes dry near the big curved bank.



The path wanders a bit away from the stream to ease the next short climb and then comes back alongside the stream where you can enjoy a fairly level section that emerges out of the trees into a more grassy area. The stream widens here. Look out for the stepping stones and gate.

3: Wispy Woods

Cross the stream using the stepping stones, go through the gate, turn left and pass a small dam/water capture scheme. Follow the main path that leads up the centre of the valley. Its a Landrover track in places and you should have a wooded hillside to your right (full of bluebells in May) and an interesting lush marshy woodland slightly below you to your left.

4 : Easily Missed Turns

Look out for where the woodland stops and the hillside to your right becomes a grassy meadow. There's no fence so its easy to miss. The path splits here and you need turn sharp left and look for a pathway sign over by the stream (a fancy boardwalk gets you over the wet bit).

Head slightly uphill with the stone wall on your right and you will come to some footpath signs. Turn right here and after a few trees you will find some more footpath signs. This is where you turn off sharp left (pretty much doubling back) and start to climb again

5 : Diagonal Climb

The path now climbs diagonally up the side of the valley and you start to look down on the woodland you've travelled through. Just keep climbing and enjoy the views that open up. There is a path off to the right at one point but ignore it.



Eventually you will appear onto a distinct wide level grassy area. This is an old tramway and you'll see it running along under the cliffs. Bear left and begin to enjoy walking on the level !!

6 : Promenade

Payback time. Enjoy the views and follow the tramway. Keep a look out for caves and gravel tracks that lead up to their entrances.

This is a long section and eventually you will approach a house on the left of the tramway. Turn down hill just before the house and walk down to the tarmac road.

7 : Back to The Incline

Keep heading down the road. Pass some cottages and you come to a sharp right hand bend in the road.

Turn left off the road here and onto a fairly level footpath that runs along the top of a conifer woodland. When the conifers stop you will be at the top of The Incline you were looking up at the end of stage 1. Look for the bench seat. Its a good place to have last look at the views.

8 : Choose your descent

The quickest way home is straight down the incline - it runs down the edge of the conifer woodland and drops you back to the stile at the end of Stage 1. Retrace your steps from there back to The Neuadd.

Because The Incline is steep and not especially rewarding we often take the following gentler path: Stand by the bench seat, with your back to the seat. ie Facing up hill. Walk forward a few yards and start hunting for a skinny path that heads off to the right. It starts out fairly level but then begins to descend gently and will deliver you to the first set of stepping stones you used earlier (end of stage 2). From here retrace your steps down the Wiggly Path and back to The Neuadd.

You might need to go down the Incline is our preferred route is too overgrown with bracken, or if you find yourself in a hurry to get back.

As a general rule try to avoid pushing through bracken (ferns) especially if you have exposed legs or arms. In the UK they can harbour ticks which are definitely best avoided.

Cycling & Mountain Biking

As keen cyclists and mountain bikers ourselves we have plenty of suggestions. We can explain routes or provide GPX files for you. **Bikes can be hired and delivered by** Drover Cycles or Bikes & Hikes. Just let us know what you have in mind and we can send you route suggestions. Here's some of the types of ride you might consider:

Quiet Lanes:

Perhaps to a pub, a café or a breathtaking mountain pass. All day tour or 1 hour blast.

DH and XC Mountain Biking: Down-hilling and natural cross country riding brought us to this area. It's pretty exceptional. We have a google map on our website showing publicised trails. (We know others)

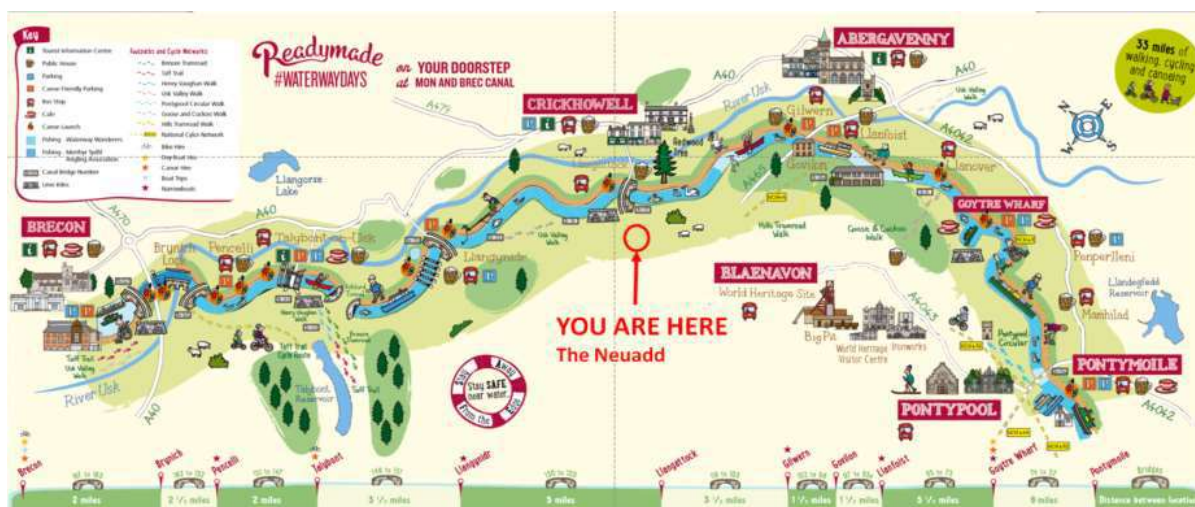
Hill Climbs:

We have a 6km 400m climb from our door, with switch backs and spectacular views.

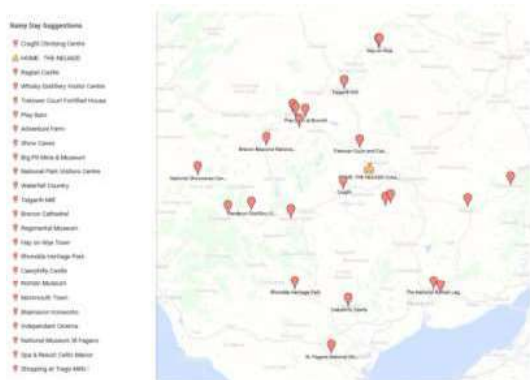
Traffic Free Cycleways: We are right by the Brecon and Monmouthshire Canal which links into a disused railway line and connects to a wider network of Sustrans routes (some of which are traffic free or virtually traffic free). Good café's and Pubs.

Monmouthshire & Brecon Canal

We are very close to the canal. **A great resource for Cycling, Walking and Running**



Days Out & Visitor Attractions



If you look under “Stunning Location” on our cottages website www.theneuadd.co.uk you’ll find some maps like this one.

When you click on them you can look at our comments about each attraction, see the location and link to the website of the attraction.

We have done the same for mountain bike trail centres.

Short Walk using Lower Tramway

START HERE



The Neuadd



Pretty stroll that takes about 40 mins

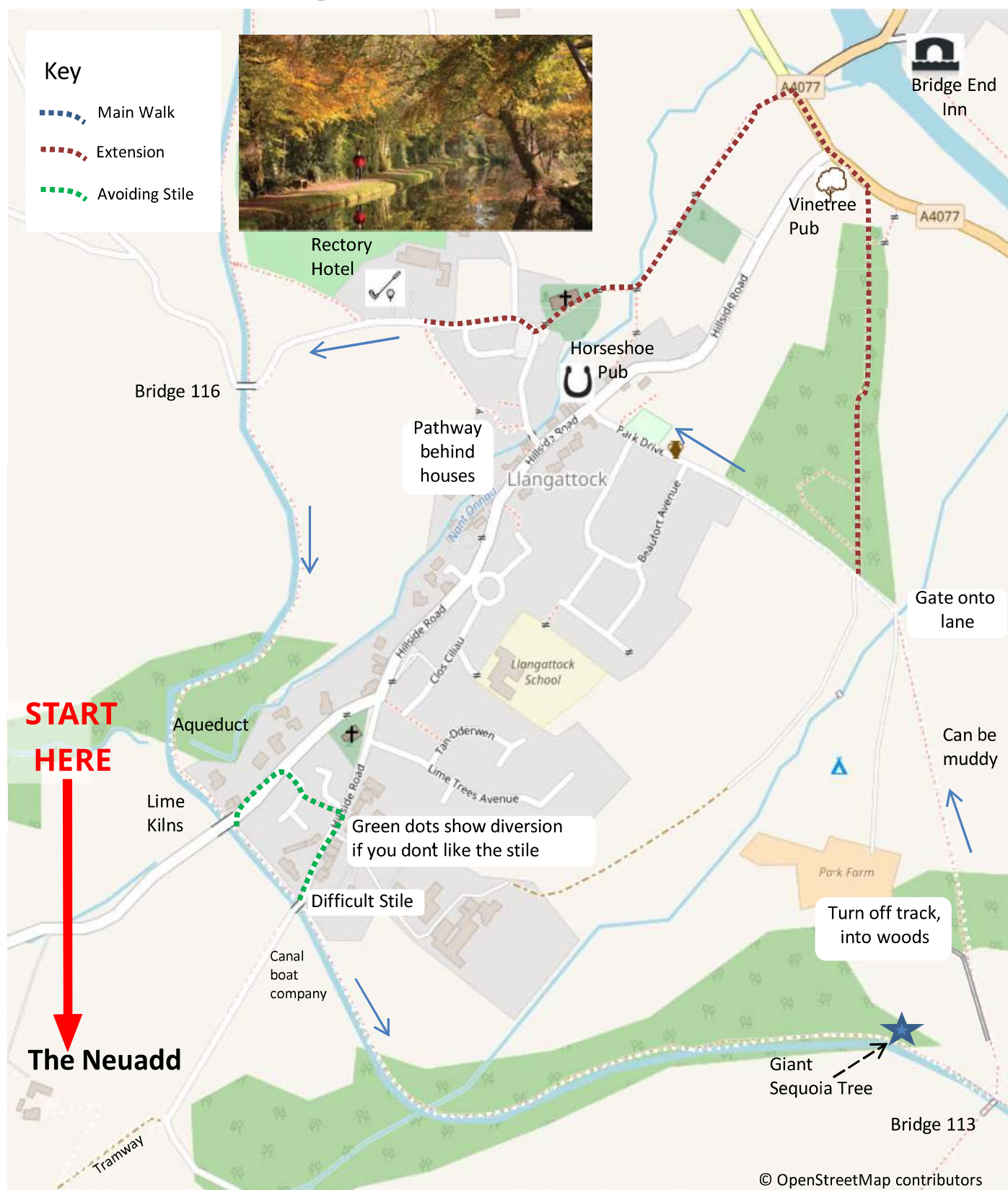
Gives a sense of where we are and will plant the seeds of wanting to walk up Llangattock Mountain

From our courtyard take the pretty oak gate and look for the 'meadow path' sign. Head down the mown path through our meadow to the personnel gate just inside the woodland at the bottom.

Turn right and follow the footpath. This is an old tramway for bringing limestone from the quarries to the kilns by the canal (look for railway sleepers re-used as gate posts). As you approach the hillside you will come to a stile with a steep wide incline ahead.

Go over the stile and turn left through the gate. This vehicle track leads past two houses and onto a lane where you turn left down hill. Follow the lane and turn left at the T junction. At the big right-hand bend you'll see The Neuadd and the field you walked down earlier.

Canal & Village Walk with Giant Redwood



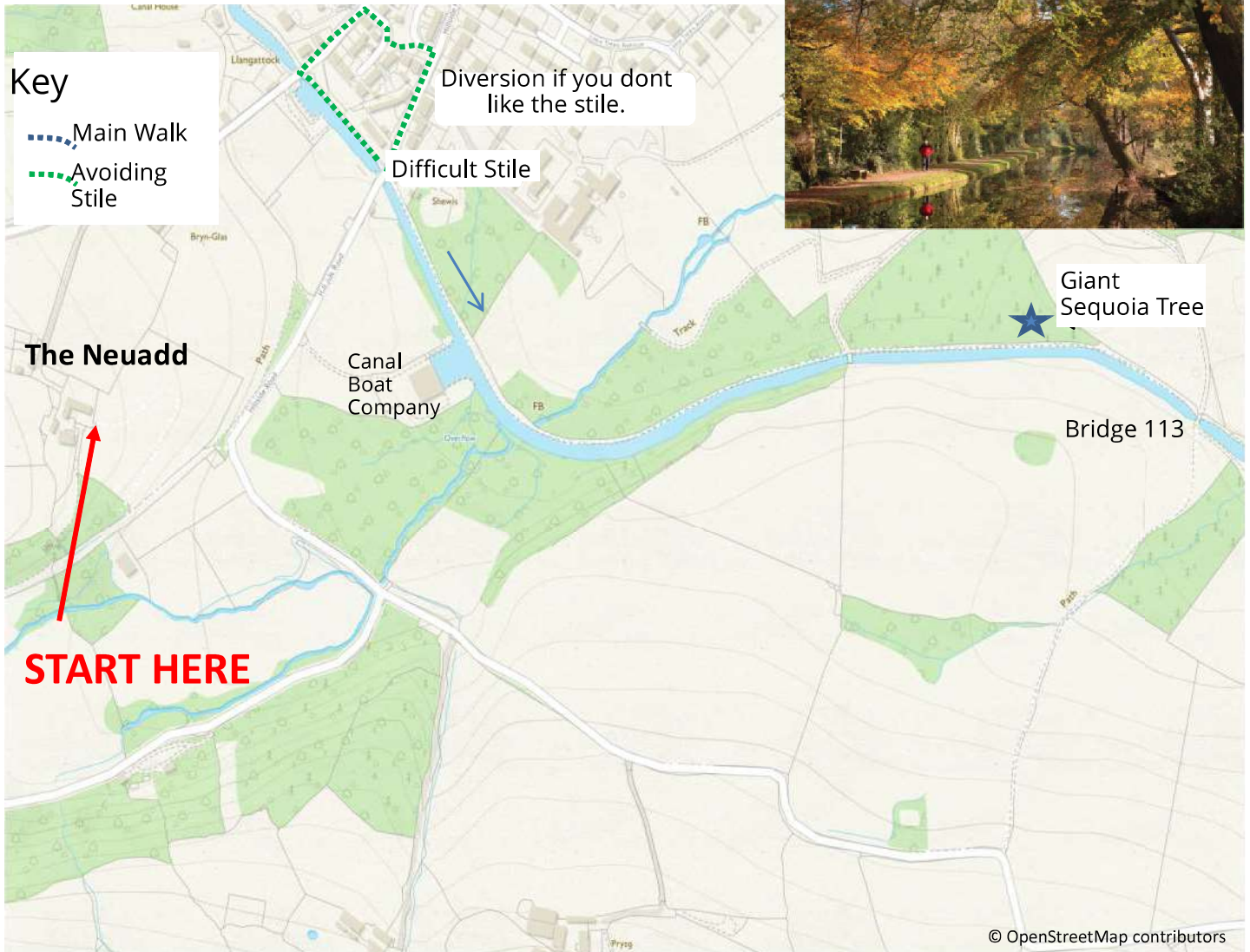
From our courtyard take the pretty oak gate and look for the “Meadow Path” sign leading you down through our meadow. Using the field gate at the bottom pop out onto the tarmac lane and turn left. Follow map. The “Extension” includes Vinetree Pub. There are riverside footpaths on the Crickhowell side of the river too. Horseshoe Pub and Rectory Hotel are options for a drink or snack. Takes c.1 hour

Canal Walk & up from Bridge 113

From our courtyard take pretty oak gate and look for the 'meadow path' sign. Head down the mown path through our meadow and use the field gate at the bottom. Pop out onto the tarmac lane, going left towards the canal. To get onto the canal tow path use the stile or follow the green diversion on the map to avoid the stile if your not into rock climbing !

At Bridge 112 cross the canal and head gently uphill to find the lane. You get a good sense of 'being in the landscape' here and the walk back along the lane is quiet with good views.

Takes about 50 mins

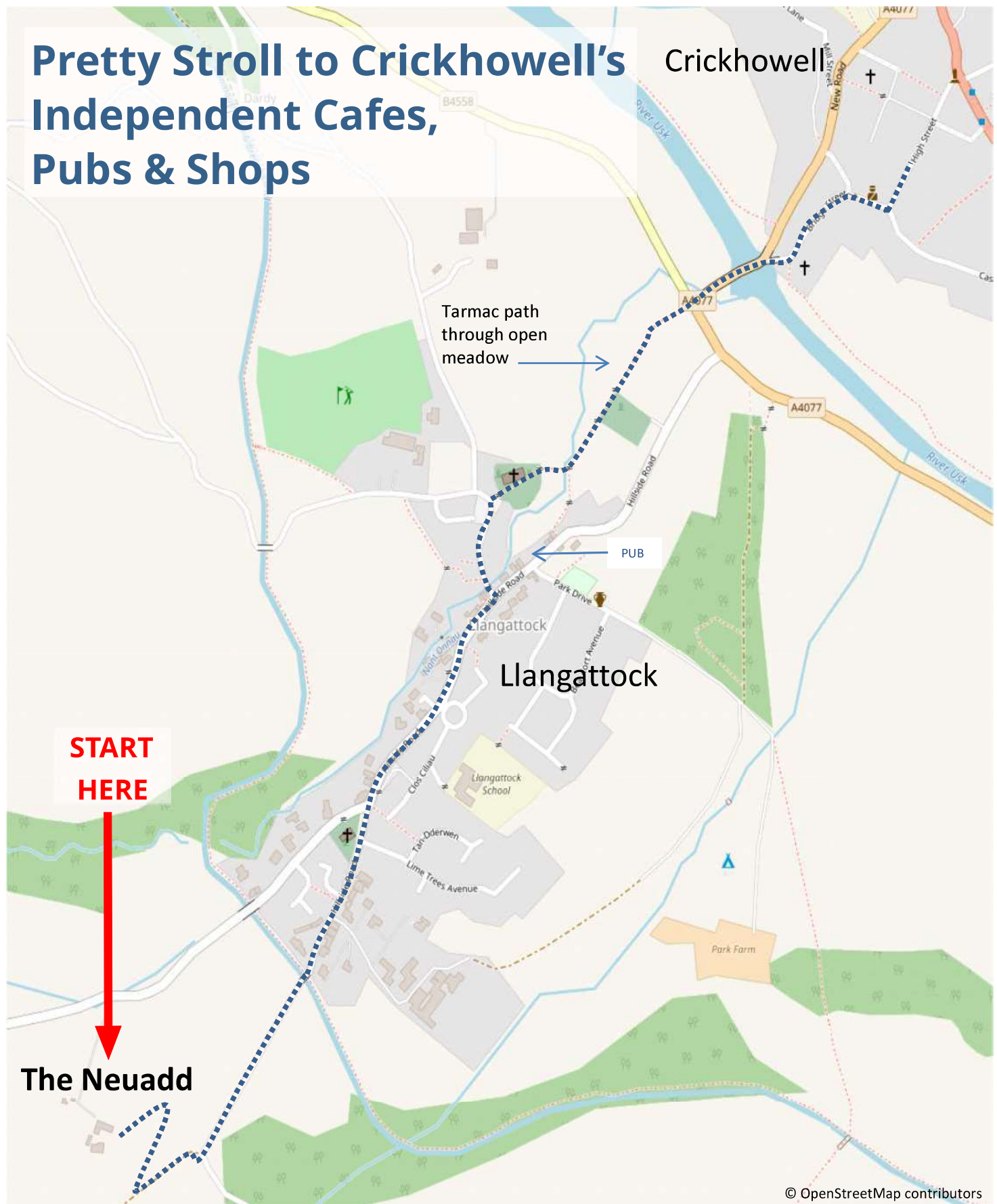


Thank you for choosing The Neuadd. We live on site in the farmhouse that overlooks the meadow, but you may not see us unless you send a text and ask to chat. It's your holiday and we don't want to intrude.

This guide is entirely independent and just conveys our own personal suggestions. Bear in mind we couldn't fit everything in and there are many more great places than we've listed. Have a lovely stay.

Julia & Peter

Pretty Stroll to Crickhowell's Independent Cafes, Pubs & Shops



From our courtyard take pretty oak gate and look for the 'meadow path' sign. Head down the mown path through our meadow and use the field gate at the bottom. Pop out onto the tarmac lane. Follow map, turning left in Llangattock Village towards the Church and through the churchyard. Takes around 25mins and a bit longer on way back. (Crickhowell Taxis 01873 811764 costs c.£12 if you fancy a lift back up to The Neuadd)